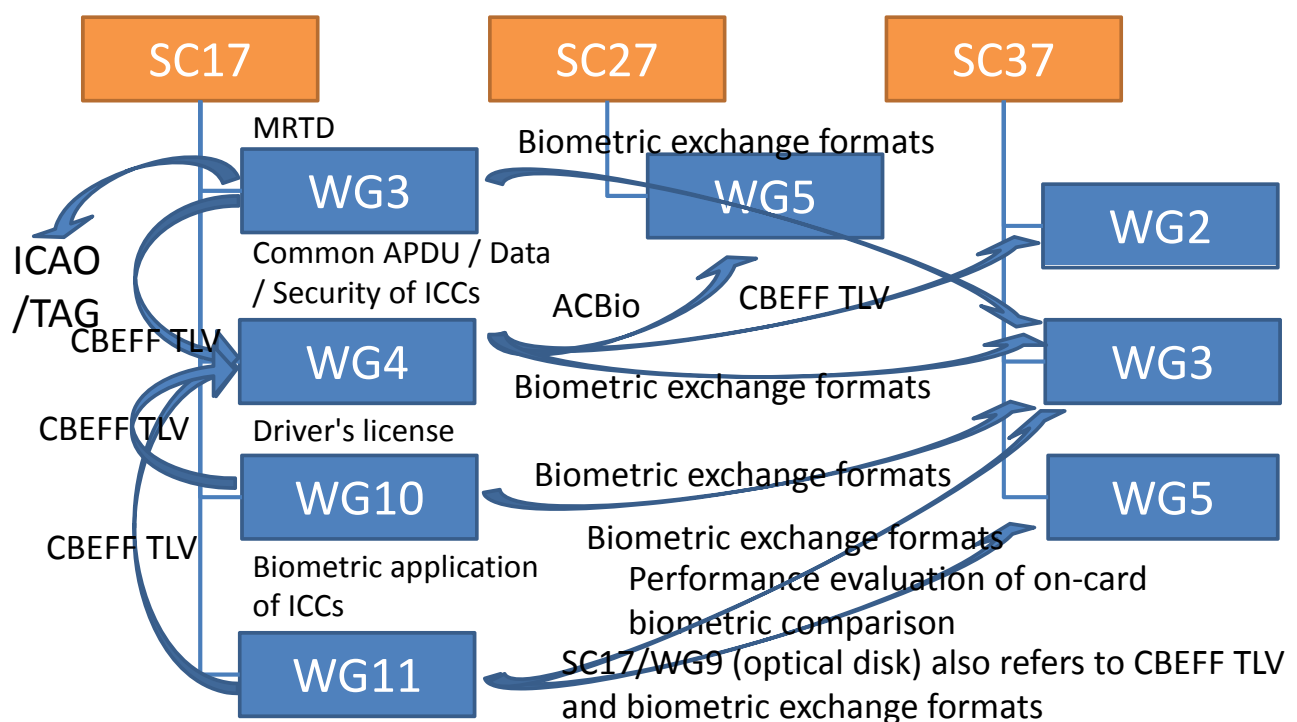


Biometrics-related standards in SC17

Shizuo Sakamoto of NEC Corporation

National convenor of SC17/WG4 and WG11,
National secretary of SC37/WG3

SC17 WGs structure and relationship to SC27 and SC37



WG3's activities related to biometrics

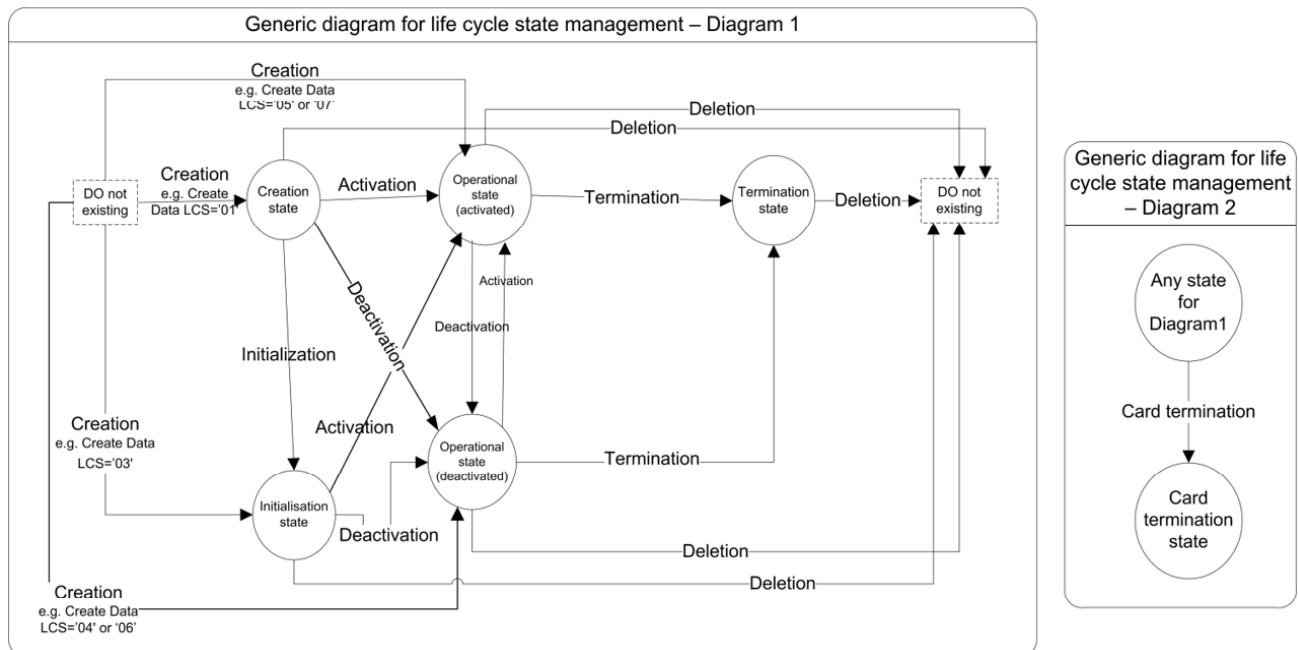
- Doc 9303 is now being reconfigured and revised (7th edition).
 - It would be approved in November NTWG meeting and then would be released in 2014.
- New features are being discussed in parallel as TRs.
 - Logical Data Structure version 2: write function will be supported. It might be used for VISAs. The original LDS text was divided into three parts (data structure, protocols and PKI).
 - Text of facial condition recommendations are also being revised.
- Migration from G1 to ~~G2~~G3 of 19794 series.
 - SC17/WG3 and SC37/WG3 are exchanging information. The next regular WebEx meeting will be on 14th October and the G3 concept WebEx meeting on 15th.
 - SC17/WG3 will consult reconsidering the migration plan with ICAO in November.

WG4's activities related to biometrics 1/2

- ISO/IEC 7816-11 will go into CD1 ballot soon, which:
 - specifies PBO command specification and ACBio function (optional) and
 - describes sample command sequences including PBO command.
 - still needs harmonization with ISO/IEC 17839-2, biometric system on card, should be considered at the next ballot. Extension of PBO command for feedback mechanism.
- ISO/IEC WD 7816-9 specifies life cycle management.
 - German NB proposed management of security objects including biometric objects. Its concerns universal handling of them.
 - Off-card comparison is only in its scope.
 - French Editor is making riot at every meeting...

Generic Diagram for LCS Management

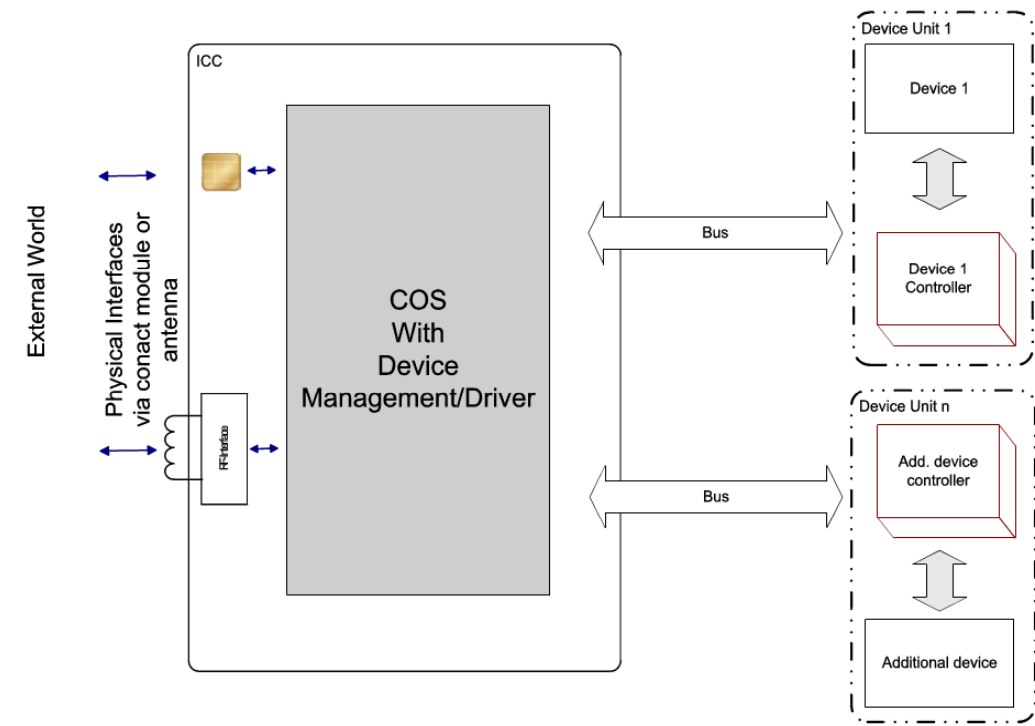
ISO/IEC WD7 7816-9



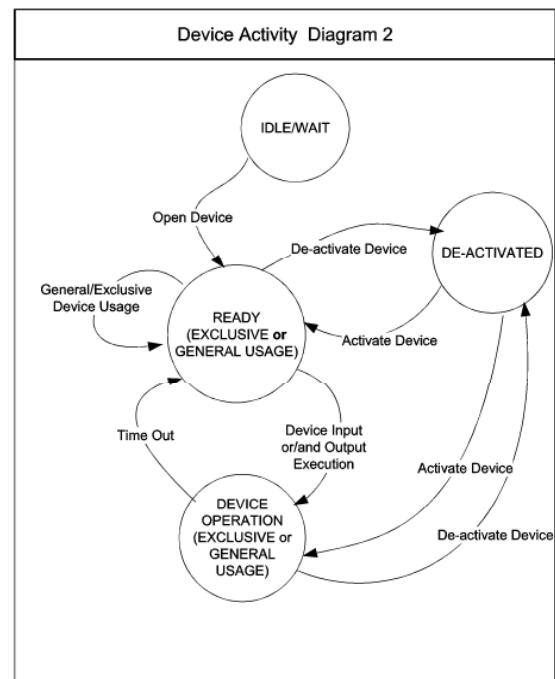
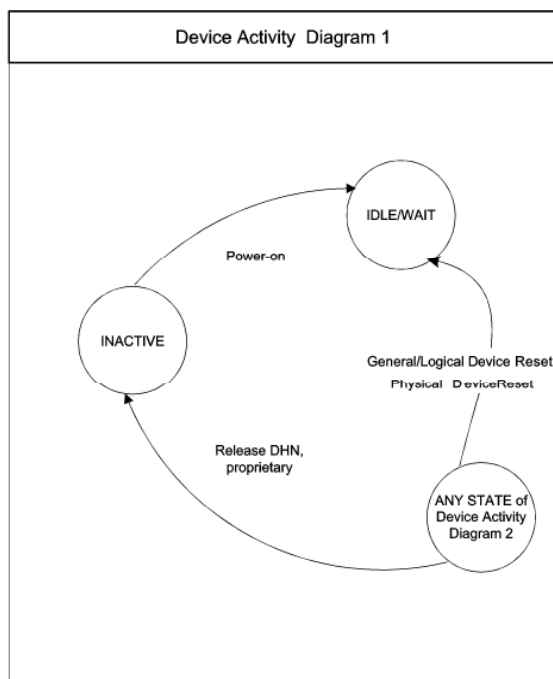
WG4's activities related to biometrics 2/2

- ISO/IEC CD 18328-1 and -3 specify ICC-managed devices including electronic displays, key pad, biometric sensors and so on. ICCs could manage any kinds of devices even if they would be outside of ICCs.
- ISO/IEC DIS 18328-2 specifies a physical aspect of devices on cards, embedding all devices in card body. Informative annex of ID-T that should be applied only to ISO/IEC 17839 series was transferred from ISO/IEC WD 7810 to it.
- There still exist several, elementary issues.

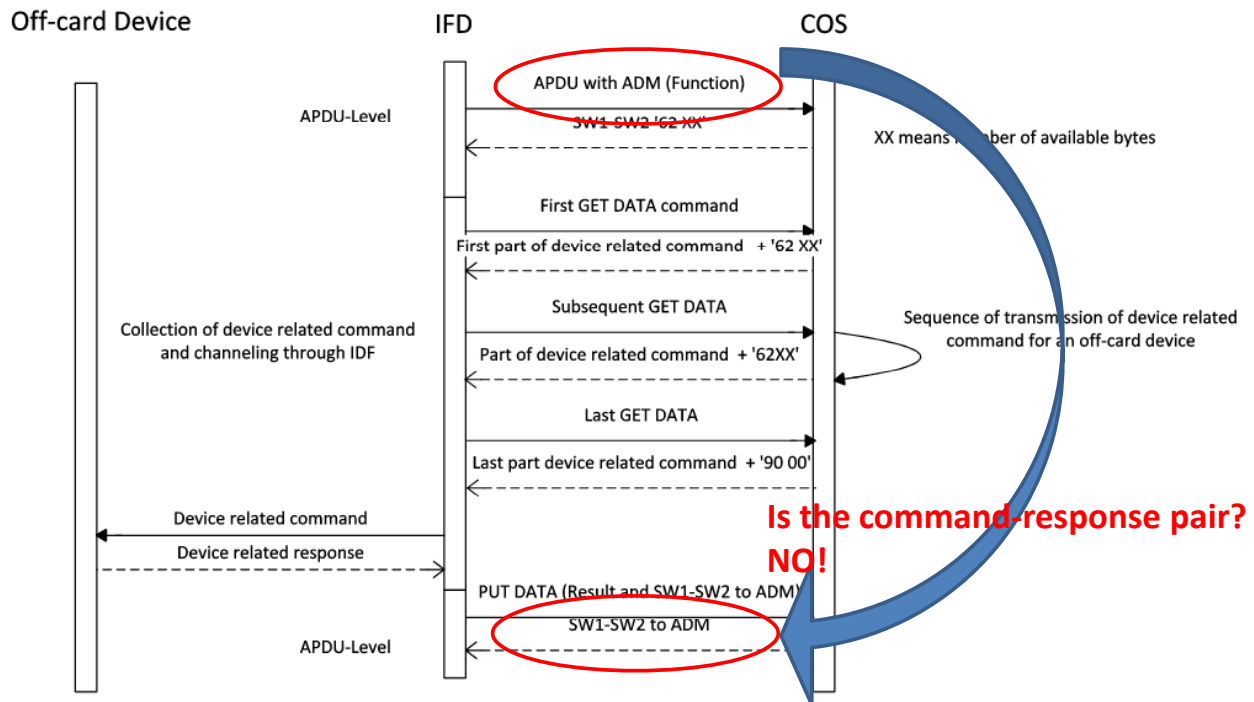
Schematic ICC with Electronic Devices



State Diagram of Electronic Device Activities



Usage of Card-originated Byte Strings for command Transmission for Off-Card Devices



WG11's activities that are only biometrics-related 1/2

- ISO/IEC 17839 series specifies biometric system-on-card. S1 and S2 types are introduced:
 - Physical characteristics of S1 is the same as ID-1, and permitted sensor area is additionally specified.
 - SC17/WG1 transferred informative annex "ID-T", previously in ISO/IEC WD 7810, to ISO/IEC DIS 18328-2 without informing WG4 and WG11.
 - This caused discussion in WG4 and WG11. However, they behaved as adults and will keep their statuses as they are 😊
 - Part 1 is the framework of this series, expecting IS publication soon.
 - Part 2 is physical characteristics during DIS ballot.
 - Part 3 is logical characteristics, CD2 ballot.

Example of Sequencing of a Biometric Capture Aborted by IFD

IFD		ICC
PBO SET INITIAL VALUES, with DO '89'	→	
	←	'90 00' ; normal processing
...		
PBO CAPTURE AND COMPARE BIOMETRIC DATA	→	
	←	'64 03' ; error: 03 bytes of data available
GET DATA	→	
	←	{'8A'-'01'-'FF'} ; request more time
PBO CONTINUE CAPTURE	→	
	←	'64 03' ; error: 03 bytes of data available
GET DATA	→	
	←	{'8A'-'01'-'FF'} ; request more time
PBO ABORT CAPTURE	→	
	←	'90 00' ; normal processing

WG11's activities that are only biometrics-related 2/2

- ISO/IEC CD 18584 specifies test methods for ISO/IEC 24787-based on-card biometric comparison.
 - Actually, WG11 recognizes the current ISO/IEC 24787 has to be revised and then SC17 initiates its revision.
 - WG11 also recognize ISO/IEC CD 18584 is on difficult situation, but decides 18584 would be published as fast as possible and its revision would follow the 24787 revision.
- PWI proposed by Singapore NB continues another year.
 - How to implement callback mechanisms onto ICCs and interface devices, in order to solve human interactions in case of biometric system-on-cards.
 - A part of idea was implemented as feedback mechanism in ISO/IEC 17839-3.
 - This is my personal feeling, but this PWI may be withdrawn next year.

THANKS. ANY QUESTIONS?